

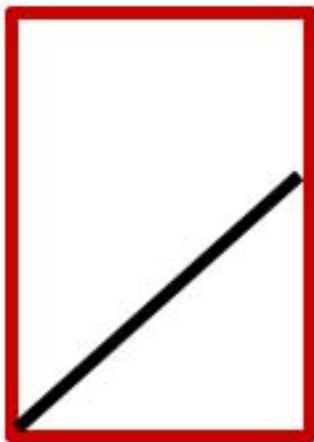
# Poinsettia Pinwheel

1

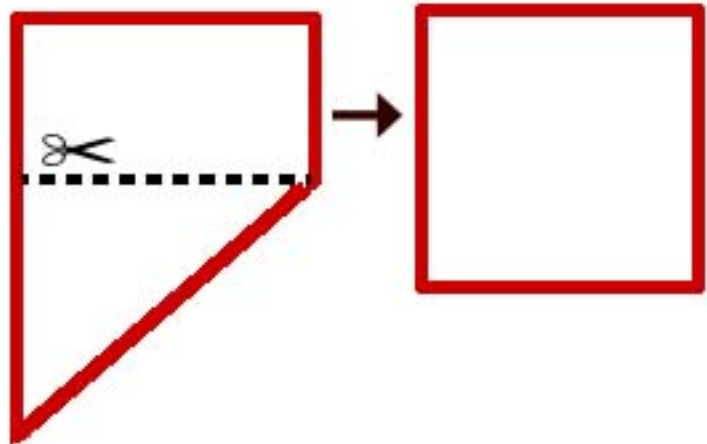
## Materials:

- one sheet red construction paper
- one 1 & 1/2-inch circle of yellow construction paper
- scissors
- one pencil with eraser
- one pushpin
- white glue or glue stick

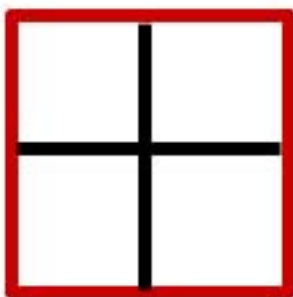
1. Fold bottom right corner of red construction paper to the left-hand side of the paper so that the bottom meets the left side.



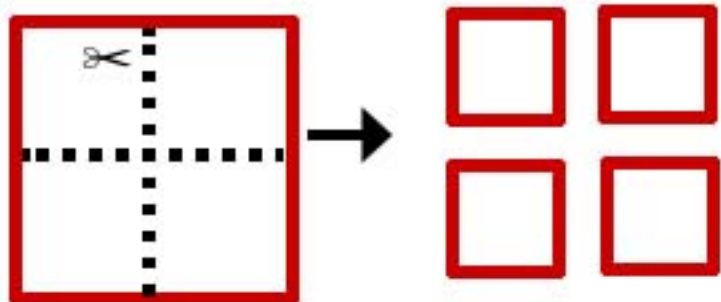
2. Cut the paper at the horizontal line made by the fold. You will have a square now.



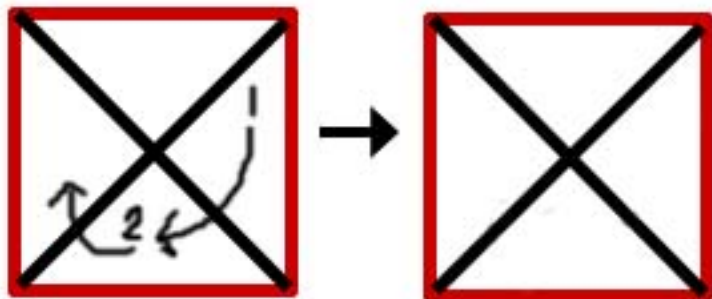
3. Fold the square in half twice, as shown.



4. Cut along each fold, making four smaller squares. You will only use 1 of them for each pinwheel, but of course that means you can make up to four with each sheet of construction paper!



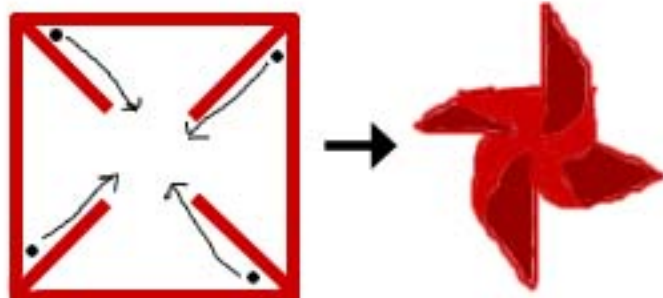
5. In one of your new squares, make 2 folds. First, fold one corner to the opposite. Then fold that triangle in half, making a smaller one.



6. Cut along each fold, stopping 1 inch from the center of the square.



7. Bend (DO NOT FOLD) every other corner in to the center of the square, gluing each down with a spot of glue or a glue stick.



8. Glue yellow circle on the center of the flower.



9. With pushpin, poke through the center of the flower. Push the pin through eraser of pencil, leaving flower between the pin and pencil.



10. Your pinwheel is complete! To make it spin, either blow on it from the side, take it outside when it's windy, or put it in front of a fan. You can "plant" the flower, as shown, or hold it while it spins.

